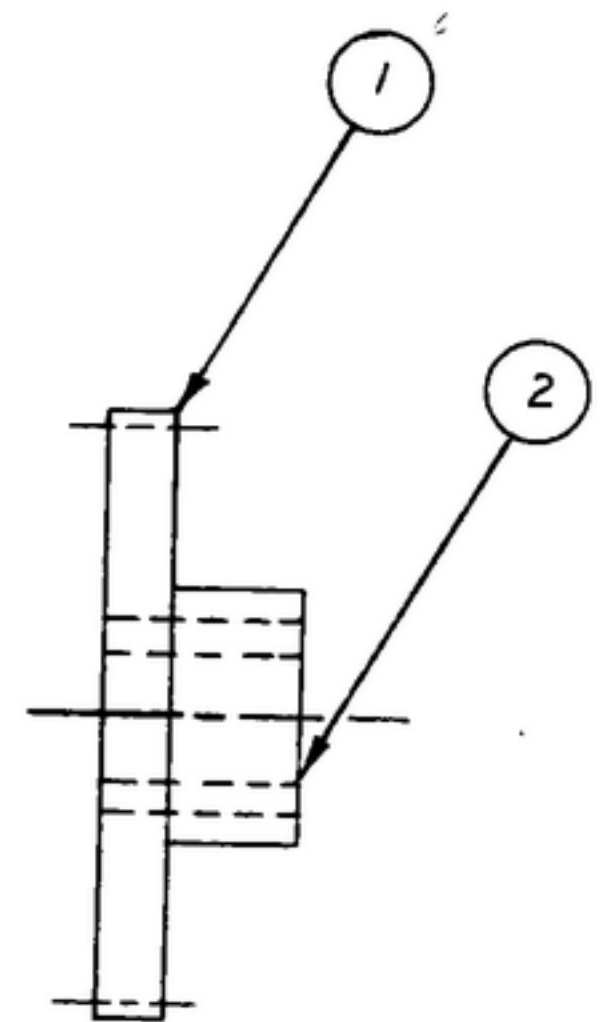


NOTICE: WHEN GOVERNMENT DRAWINGS, SPECIFICATIONS, OR OTHER DATA ARE USED FOR ANY PURPOSE OTHER THAN IN CONNECTION WITH A GOVERNMENT CONTRACT, THE UNITED STATES GOVERNMENT THEREBY MAKES NO REPRESENTATION OR WARRANTY, AND THE FACT THAT THE GOVERNMENT HAS MADE SUCH REPRESENTATION OR WARRANTY DOES NOT IN ANY WAY AFFECT THE LIABILITY OF THE CONTRACTOR OR THE FACT THAT THE SAID DRAWINGS, SPECIFICATIONS, OR OTHER DATA ARE NOT TO BE REGARDED BY REPLICATORS OR OTHERWISE AS IN ANY MANNER LIMITING THE HOLDER OR ANY OTHER PERSON OR CORPORATION, OR SERVING AS EVIDENCE OF NEGLIGENCE TO MANUFACTURE, USE, OR SELL ANY PATENTED INVENTION THAT MAY IN ANY WAY BE RELATED THEREBY.

THIS DOCUMENT HAS BEEN FORWARDED BY THE GOVERNMENT AND MAY BE REPRODUCED AND USED IN CONNECTION WITH ANY GOVERNMENT PURCHASE OR MAINTENANCE OPERATION.

*FOR INFORMATION ONLY. CONTRACTOR MAY AT HIS OPTION DEVIATE FROM THESE PROCESS DETAILS.

REVISIONS			
SYM	DESCRIPTION	DATE	APPROVAL



- NOTES:
- 1. BEARING MUST BE FLUSH TO 1/64 LESS BOTH SIDES.
 - 2. BURNISH TO .2500^{+0.0005} DIA
 - 3. PRESS BEARING (2) INTO GEAR (1) AS SHOWN.

COLLINS PART NO.	ITEM	QTY	PART NO.	DESCRIPTION	NATL	NATL SPEC	NOTES
558 0234 002	2	1	SM-B-283155-1	BEARING			
558 0264 002	1	1	SM-B-248915	GEAR - SPUR			

LIST OF MATERIAL -COLLINS PART NO. 558-0291-002

COLLINS NO.	QTY	NEXT ASSY	USED ON
558-0324-004	1	SM-D-248975	SG-DL-248775
		SM-D-343600	

DRAWN: *Mmd* CHECKED: *Rln* APPROVED: _____

UNLESS OTHERWISE SPECIFIED:
 DECIMAL DIMENSIONS INCLUDING HOLE SIZES MAY VARY ±.008
 FRACTIONAL DIMENSIONS INCLUDING HOLE SIZES MAY VARY ±1/64
 MACHINED ANGLES MAY VARY ±1°
 SHEARED ANGLES MAY VARY ±.25°
 BROKEN ANGLES MAY VARY ±1°
 ECCENTRICITY BETWEEN ANY DIAMETERS ON THE SAME CENTERLINE SHALL NOT EXCEED .010 TOTAL INDICATOR READINGS.
 ALL DIMENSIONS ARE FINISH DIMENSIONS INCLUDING APPLIED FINISH AND ARE GIVEN IN INCHES.

COLLINS-RADIO CO.
 CEDAR RAPIDS, IOWA
 14214-PH-51-93

SIGNAL CORPS

REVIEWED: *PME*

APPROVED: *HLV*
PME

DATE: 5 DEC 55 SCALE: 2/1

DEPARTMENT OF THE ARMY
 SIGNAL CORPS ENGINEERING
 LABORATORIES

FORT MONMOUTH NEW JERSEY

SM-B-248942

GEAR ASSY

WHEN REFERRING TO THIS DRAWING STATE DRAWING NO., APPLICABLE ISSUE SYMBOL, IF ANY, AND DATE